

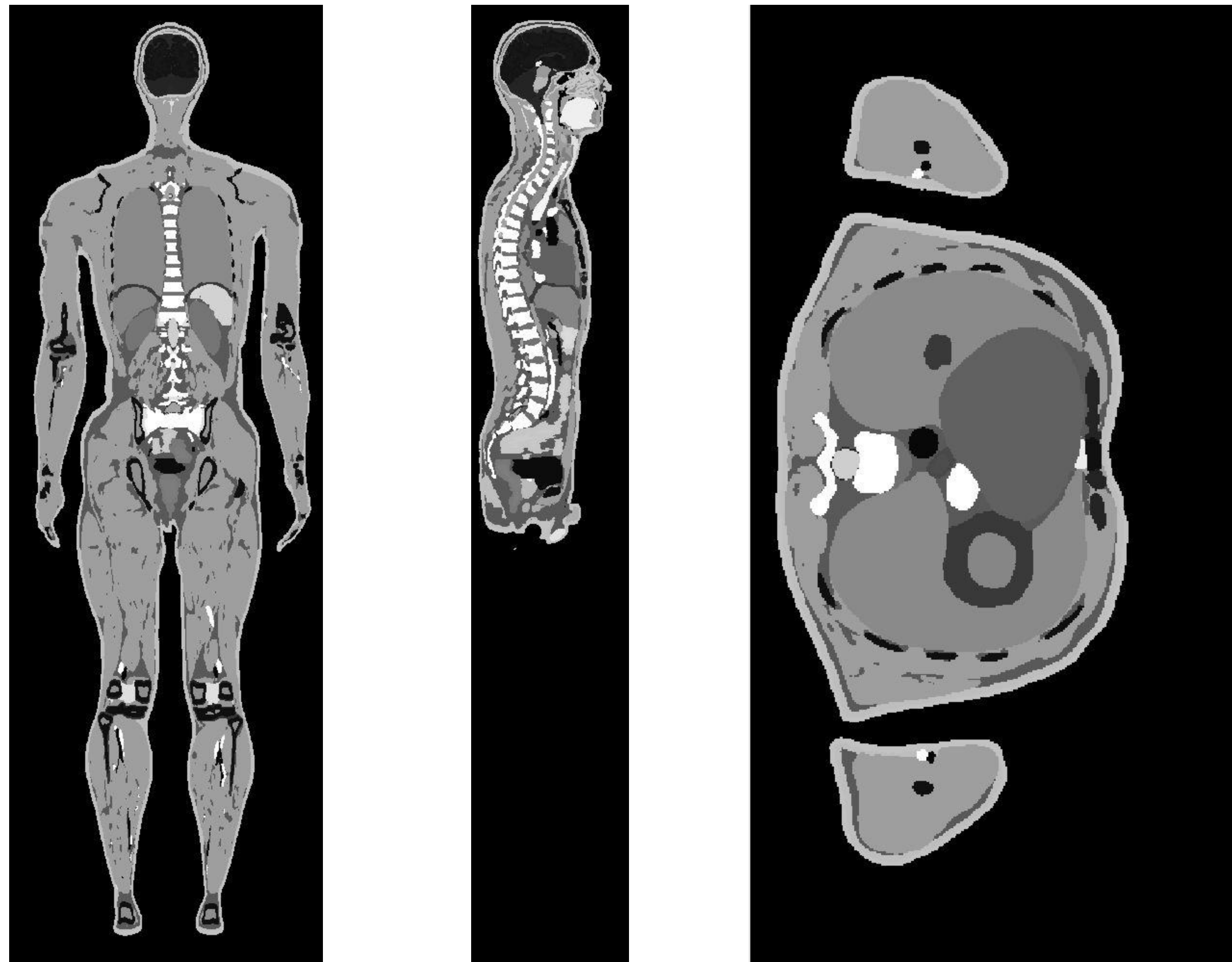
# Human Torso Model for Heat Transfer Analysis

Tejash Patel, Xiaojiang Xu, Reed W. Hoyt  
Biophysics & Biomedical Modeling Division,  
U.S. Army Institute of Environmental Medicine, Natick, MA 01760

**Introduction:** A 3D human model is essential for heat transfer analysis using finite element analysis (FEA). This describes the approach to creating a human torso in Solidworks for heat transfer simulation in COMSOL.

	Whole Torso	Fat	Muscle	Skin	Core
ITIS	2183.3	454.2	861.1	102.0	765.5
Solidworks	2187.9	422.5	875.7	127.7	761.9

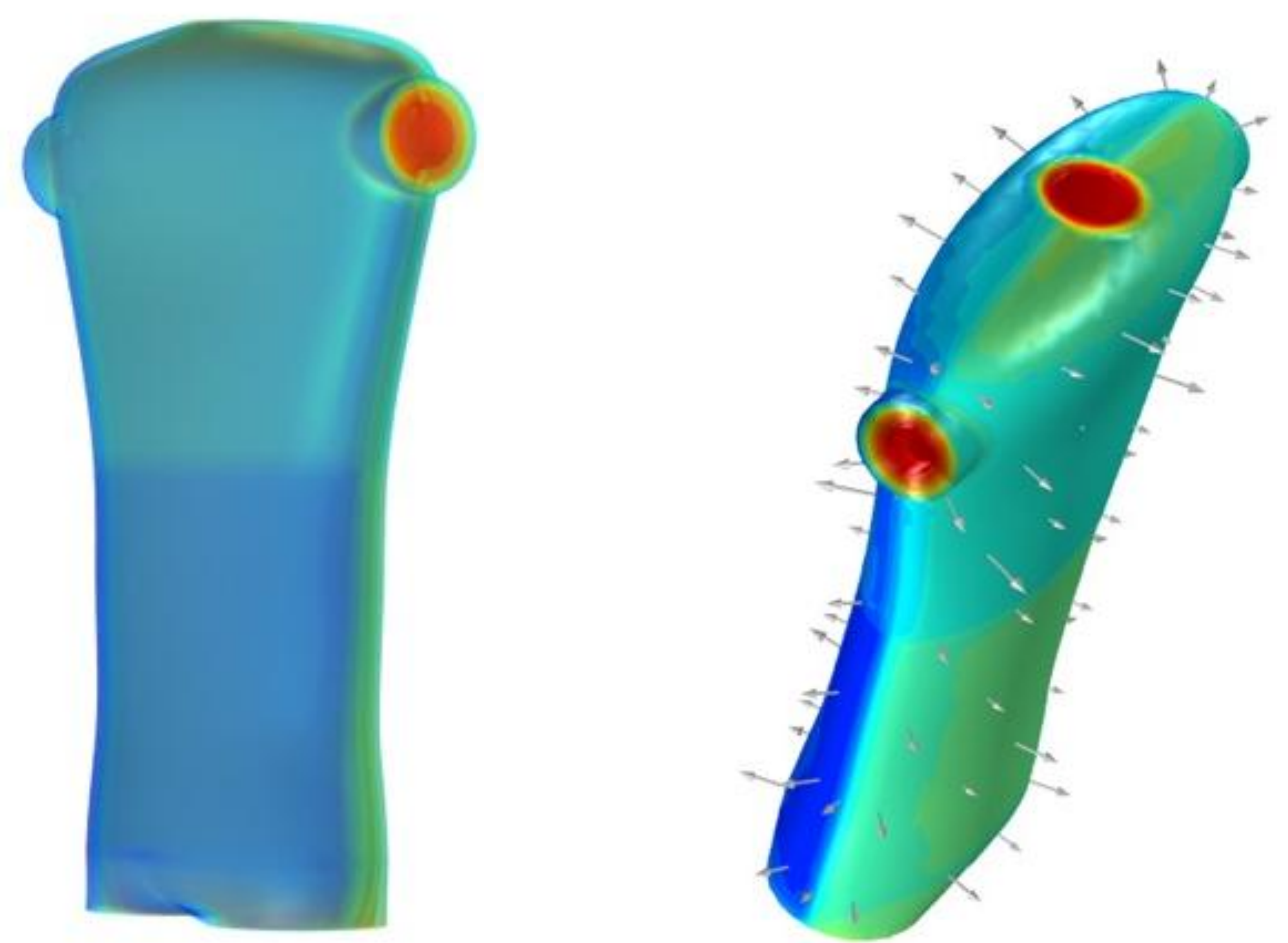
**Table 1.** ITIS and Solidworks torso tissue volumes (in<sup>3</sup>)



**Figure 1.** ITIS Data

**Methods:** The torso was derived from the 'Virtual Family' whole-body voxel labelmaps from the ITIS Foundation (Zurich, Switzerland)[1] and built in Solidworks. ITIS data is 1mm voxel data segmented into 77 tissue types. Since the major tissue types that affect metabolic heat transfer are skin, fat, muscle, bone, and core, all tissues were binned into these categories and individual components were created. Geometric parameters were determined by taking measurements of anatomical structures within the 3d voxel data along the coronal, sagittal, and axial planes. Table 1 compares ITIS and Solidworks tissue volumes.

**Results:** Solidworks Livelink was used to perform a steady state heat transfer analysis in COMSOL. The torso surface was divided into four regions: front and back, top and bottom. Each region can have its own boundary conditions, representing impacts of local clothing properties on heat exchange between body surface and the environment.



**Figure 2.** Torso Boundaries **Figure 3.** Torso Heat Transfer

**Conclusions:** This approach is feasible for creating a human model in CAD format. The FEA heat transfer module has the capability to simulate inhomogeneity of a clothing ensemble.

#### References:

1. Foundation for Research on Information Technologies in Society (IT'IS): Human & Animal Models, <http://www.itis.ethz.ch/services/human-and-animal-models/human-models>



Disclaimer: The opinions or assertions contained herein are the private views of the author(s) and are not to be construed as official or reflecting the views of the Army or the Department of Defense. Any citations of commercial organizations and trade names in this report do not constitute an official Department of the Army endorsement or approval of the products or services of these organizations.

Excerpt from the Proceedings of the 2012 COMSOL Conference in Boston

